

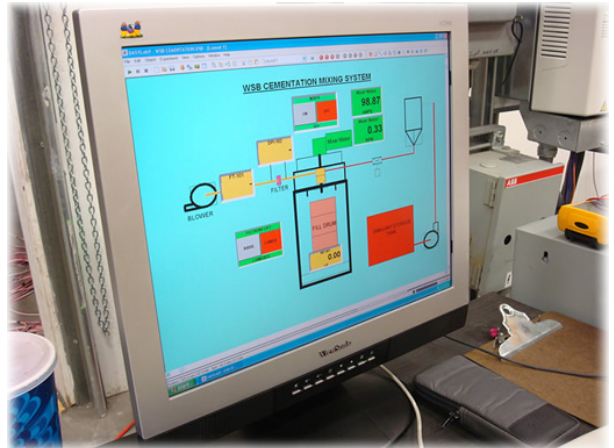
## Savannah River Site Cementation Glovebox System

MCE was contracted to provide design, fabrication, testing, and installation support of a cementation glovebox system for the Savannah River Site. The cementation glovebox system will be used to mix liquid radioactive waste with a dry mix containing Portland cement to create a grout to immobilize the waste for disposal.

The system consists of four identical gloveboxes. Each glovebox has equipment to convey 55-gallon drums preloaded with the dry mix to a station for adding the liquid waste to the dry mix in the drum and mixing them into a homogeneous mixture. The filled drum is then moved out of the glovebox and staged for curing of the grout.

The gloveboxes are designed, built, and tested in accordance with American Glovebox Society requirements. A custom-designed lift conveyor is being provided for positioning the drum to interface with a specially designed interface port.

Movement of the drum through the glovebox is controlled by a PLC to assure proper conditions are met for each step in the process.



**Client: EnergySolutions  
Richland, Washington**